



脈衝水路清洗機

WATER PULSE CHANNEL CLEANING MACHINE

水氣脈衝水路清洗，無毒更環保
把乾淨資源留給下個世代
Flush the cooling channel just by Water and Air, Time and Cost Saving with Zero Pollution.

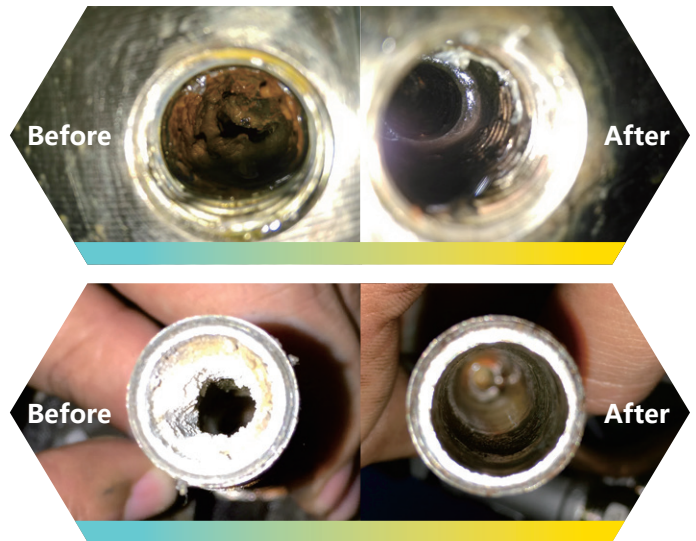


適用範圍：封閉管路系統模具、冷卻器、冷凍機、模溫機、熱交換器、傳電輪、淋模加熱輪、冰水機...等等。

水路阻塞=品質不良及生產浪費

Water channel stuck leads to Quality issue and continuous Waste

模具及設備冷卻水路內存在大量鐵鏽、水垢及雜物，引起管路管徑變小、堵塞、換熱不良等問題。
In Mold and all kinds of machine water channel with rust, scale and debris.
These substance cause pipe diameter more narrow and cloggy, heat transfer worse and other issue.



一機適用多機種

One machine for Multi Pattern in your factory

2
WAYS

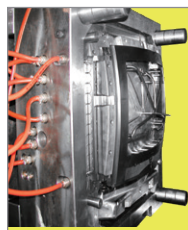


雙效清理
Dual Effect Cleaning
藥劑+脈衝震盪清洗

2
SIDES



雙向清理
Dual Path Cleaning
正反雙向的來回衝擊



模具水路
Mold Channel



機器油溫冷卻器
Machine Oil Cooler



水式冷凍機
Constant Water Chiller



模溫機
Mold Temperature Controller

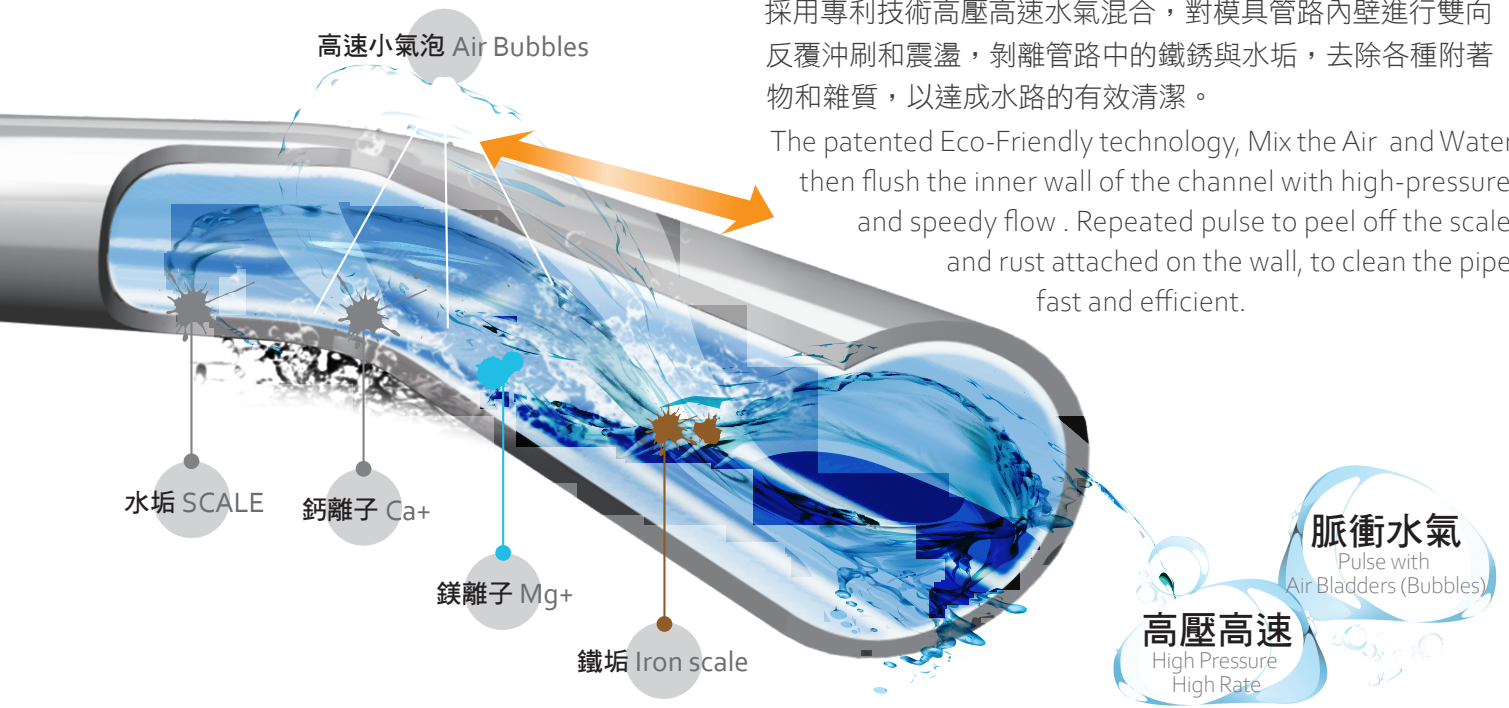


急冷急熱模溫機
Rapid Cool and Heat Mold Temperature Controller

專利原理 Patented Tech Principle

採用專利技術高壓高速水氣混合，對模具管路內壁進行雙向反覆沖刷和震盪，剝離管路中的鐵銹與水垢，去除各種附著物和雜質，以達成水路的有效清潔。

The patented Eco-Friendly technology, Mix the Air and Water then flush the inner wall of the channel with high-pressure and speedy flow. Repeated pulse to peel off the scale and rust attached on the wall, to clean the pipe fast and efficient.



From A

To A+

冷卻流量增加
Increase cooling water flow rate.

冷卻效率提高
Improve cooling efficiency.

換熱效率穩定
Heat exchange efficiency and stability.

成型週期縮短
Shorter Cycle time.

生產效率提升
Boost Productivity.

產品良率上升
Better Quality.

特點 Features

不須藥劑 可直接使用自來水作為清洗媒介

No need to use chemicals. Just Water and Air.

功能多樣 高效清洗、測漏試壓、排水吹乾、清模防鏽、流量檢測及數據紀錄

Multi-function: Efficient cleaning, leaking test, pipe drainage antirust, flow detection and data records.



機器型號	NEW Brands KING'S	KWCII-15C	KWCII-22C	KWCII-30C	KWCII-55C
	OLD Brands KING'S	KWC6-15	KWC6-22	KWC8-30	KWC8-55
清洗媒體 Cleaning Medium	清水或環保清洗劑 Water or Chemical				
控制系統 Control System	PLC及觸控式螢幕控制 PLC, Touch Panel and KING'S Operation System				
水箱容積 Water Tank Capacity	100 S/Dual	100 S/Dual	150 S/Dual	150 S/Dual	
管配尺寸 Piping Dia	3/8" *8	1" *2	1.5" *2	2" *2	
水泵功率 Pump Capacity	1.5 KW	2.2 KW	3.0 KW	5.5 KW	
供電電源 Power Source (V/Hz)	AC220V 1P+N+E/AC380V 3P+N+E(5M)	AC220V 1P+N+E	AC380V 3P+N+E(5M)		
水箱數量 Water Tank Number	單或雙水箱	單或雙水箱	單或雙水箱	單或雙水箱	
機器尺寸 Outlook Dimension	160*50*112cm	160*50*112cm	175*60*130cm	175*60*130cm	
機器重量 Weight	280KG	290KG	360KG	380KG	

鑫野智動工業股份有限公司

