



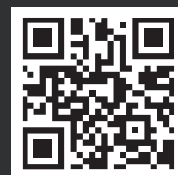
Water Channel Cleaning Machine

An Innovative Technology Without Using Chemicals.

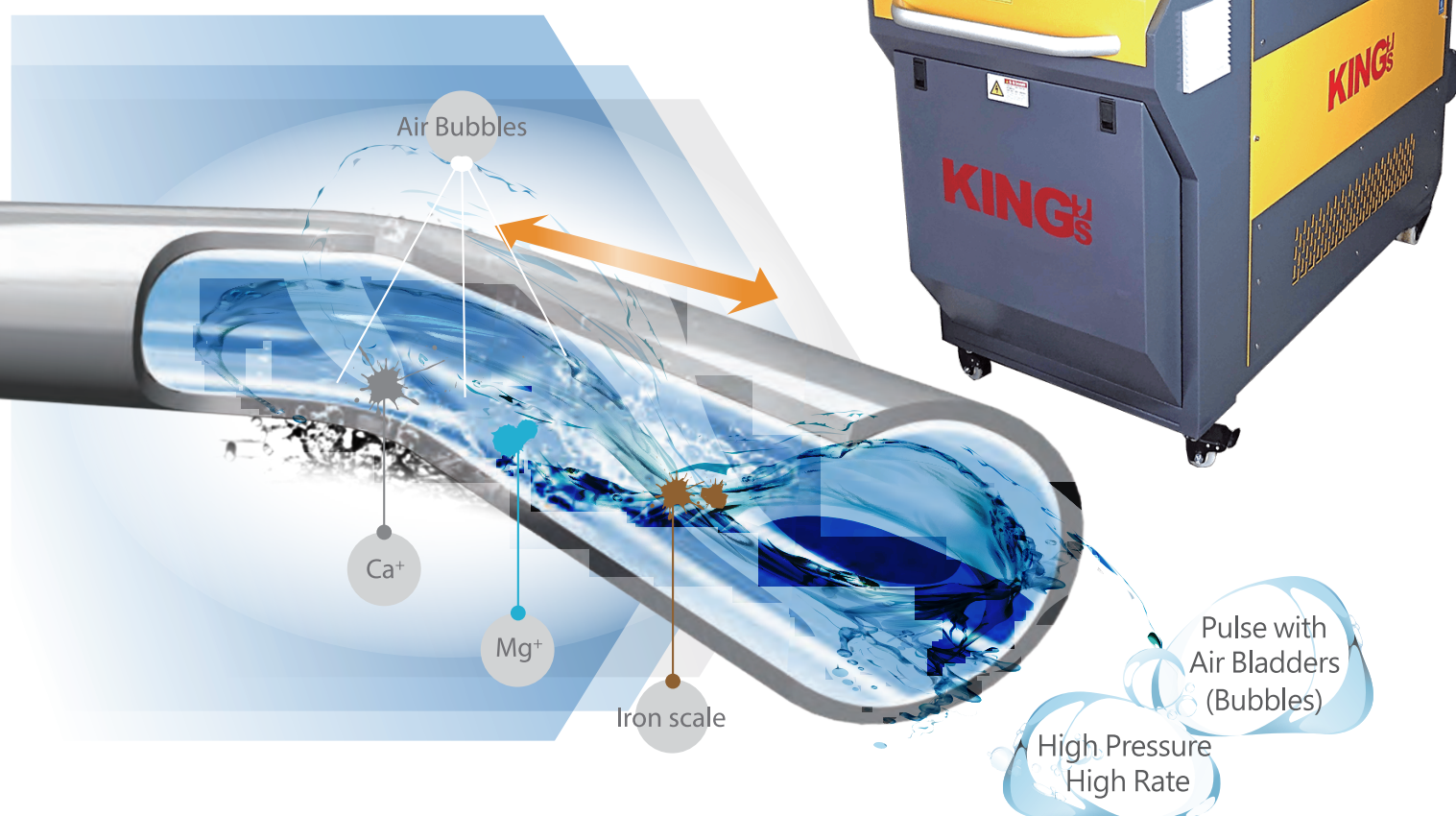


KING'S Solution Corp.

| No.457, Nanshang Rd., Guishan Dist, Taoyuan City 33392, Taiwan | www.injection.com.tw/
| sales@kingsmachinery.com.tw | Tel: +886-3-3218768 | Fax: +886-3-3218769



► Water Channel Cleaning Machine



Smart Maintenance for Molds Create New Value for Enterprises An Innovative Technology Without Using Chemicals.

Mold is the core of industrial production such as injection molding, blow molding, extrusion and die-casting. It has big influence on the merits and demerits of product quality and the production efficiency.

Good maintenance for molds can reduce costs and increase profits for enterprises.

With patented Eco-Friendly technology", KING'S mold channel cleaning machine improves both product quality and production efficiency.

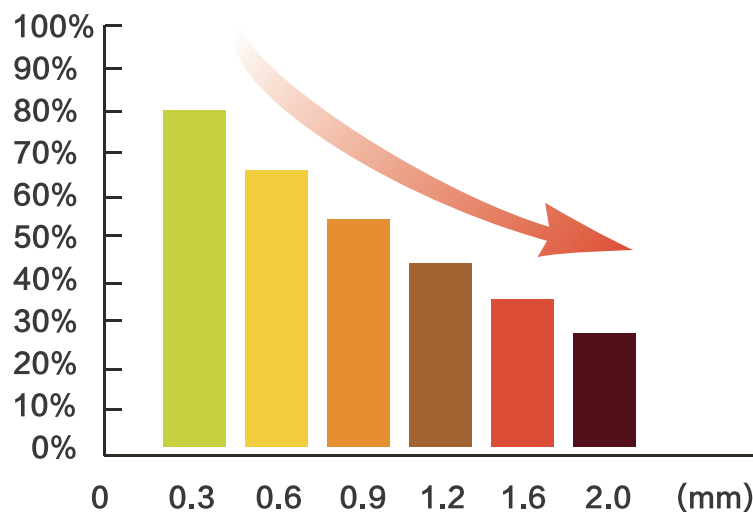
► Water Channel Trouble

The scale, iron erosion, sludge, and algae are easy to be deposited in the water channel, which will make the channel become narrow. It'll lead to low heat exchange rate, product quality instability, increase defective rate, decrease production efficiency, increase the cost of production.

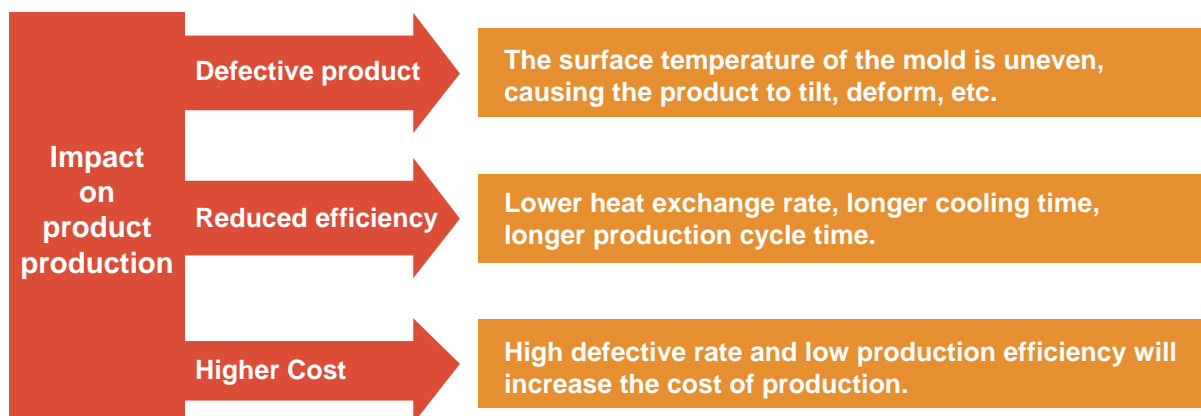


A research from US Refrigeration Authority:
Only with 0.3mm thickness of scale in the water channel
will lead to heat exchange loss of 21%.

Heat Exchange Rate



Scale Thickness



► Water Channel Cleaning Machine



Technical principle

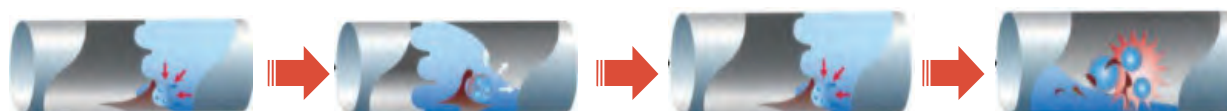
With patented Eco-Friendly technology, KING'S mold channel cleaning machine has the pulse controller to make the compressed air act in the water flow. It generates a spiral shear force along the inner wall of the channel, causing the scale surface damaged. The bubble bursts with high-speed, high-pressure on the solid surface, and removes of structural layers and fragile debris, so that the channel can be effectively cleaned.

Forward cleaning



- (1) Feed high-pressure water and vapor into the channel, and by collision it'll go into the gap between the scale and the inner wall.
- (2) When water flows from a low pressure to a high pressure place, the air in the water expands and becomes water vapor, which in turn becomes bubbled.
- (3) The bubbles explodes under pressure and generate explosive shock waves on the scale layer.
- (4) The shock wave occurs radially, and peels off the scale layer.

Backward cleaning



- (5) In the reverse direction, the water with the same impact will enter the gap between the scale and the inner wall.
- (6) The scale layer which is not fully stripped off during the forward cleaning will also help generate bubbles when it is reversed.
- (7) On the same principle with forward cleaning, peel off the layer by running back and forth
- (8) With the turbulence, the scale is washed away with the water.

► Effect

● Before Cleaning

● After cleaning



2
WAYS

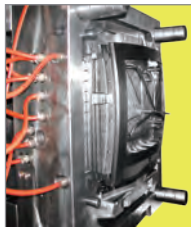


Dual Effect
Cleaning

2
SIDES



Dual Path
Cleaning



Mold Channel



Machine Oil Cooler



Constant Water
Chiller



Mold Temperature
Controller

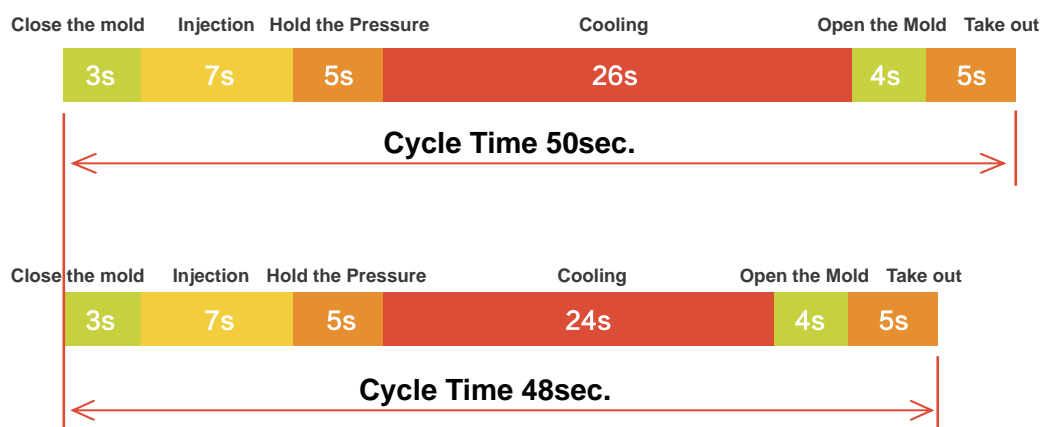


Rapid Cool and Heat
Mold Temperature
Controller

► Benefit

Here we have the comparison before and after using KING'S mold channel cleaning machine. It can certainly improve the cooling water circulation and the heat exchange rate.

Mold	Mold Chinnel	Flow(L/H)
	Before Cleaning	1534
	After Cleaning	1942
Result	Difference	408
		Increase 27%



- Reduce cooling time, cycle time, defective rate.
Increase production efficiency!

Comparison after reducing cycle time:

Machine 1250T	Mold channel	Cycle Time	Revenue per hour	Revenue per day	Revenue per year
	Before Cleaning	50 sec	USD34	USD816	USD297,840
	After Cleaning	48 sec	USD35.5	USD852	USD310,980
Result		2 sec faster	USD1.5 more	USD36 more	USD13,140 more

- KING'S water channel cleaning machine can help one molding machine increase the profit of nearly USD13,140 per year, the more number of molding machines, the more revenue you can get!

► Function

Automatically Multi-Function Water Channel Cleaning Machine



► Specification

Model Number	KWCII-15C	KWCII-22C	KWCII-30C	KWCII-55C
Cleaning Medium	Water or Chemical			
Control System	PLC, Touch Panel and KING'S Operation System			
Water Tank Capacity	Single 100L or Dual 50L*2		Single 150L or Dual 75L*2	
Piping Dia	3/8" *8	1" *2	1.5" *2	2" *2
Pump Capacity	1.5KW	2.2KW	3.0KW	5.5KW
Power Source (V/Hz)	AC220V 1P+E / AC380V 3P+E(5M)			
Water Tank Number	Single Water Tank or Dual Water Tanks			
Outlook Dimension	160*50*120cm		175*60*130 cm	
Weight	280KG	290KG	360KG	380KG
Standard Function:	√: With X:Without			
PLC Procedure Control	√	√	√	√
7" Touch Panel Display	√	√	√	√
Smart Booster Flush Cleaning	√	√	√	√
Dual Path Cleaning	√	√	√	√
Emergency Bottom	√	√	√	√
SUS304 Stainless Steel Structure	√	√	√	√
Pipe Drainage	√	√	√	√
Flow Detection	√	√	√	√
50 set Cleaning Data Record	√	√	√	√
1 Years Warranty	√	√	√	√
Leakage Test	√	√	√	√
Trolley	√	√	√	√
Export Cleaning Data by SB	√	√	√	√

- Above parameters are parts of product function, the actual specifications may be adjusted if needed.